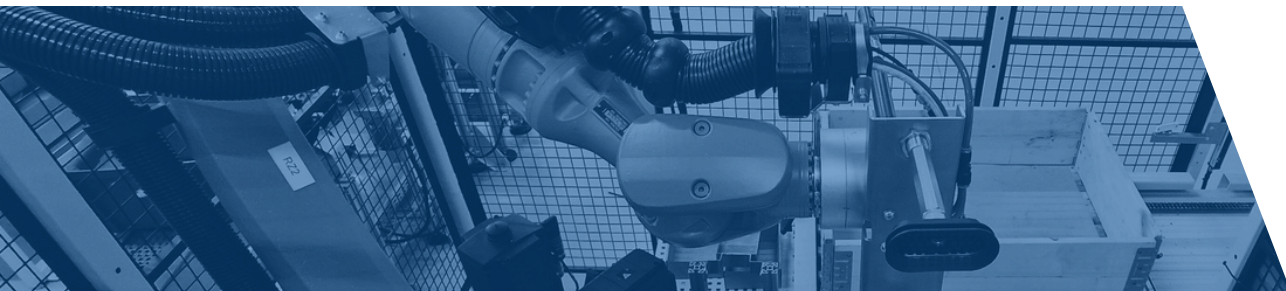


MTA

Engineering solutions for production improvement



MTA delivers **automation, robotization, modernization, and relocation projects for production solutions**, aimed at achieving real improvements in industrial plant operations - **enhancing efficiency, stability, and workplace safety.**

We take **full responsibility for the technical side of the project** - from concept and design, through construction and commissioning, to service and further development.

We operate as a single accountable project partner, removing from the client the need to coordinate multiple suppliers.

20+ years of experience

80+ engineers and specialists

200+ completed projects

20+ industrial sectors

Poland and worldwide

KUKA

Official System
Partner



Automation, robotization, and modernization of production processes



We create complete production solutions — from concept development and plant layout planning, through the selection, delivery, and integration of machinery, to line commissioning and long-term maintenance. We combine **automation, robotics, and process modernization** into one cohesive system that operates reliably from the very first day of production.

Handling and machine integration

We reduce the share of manual labor in production processes by replacing it with handling solutions and the integration of machines and systems.

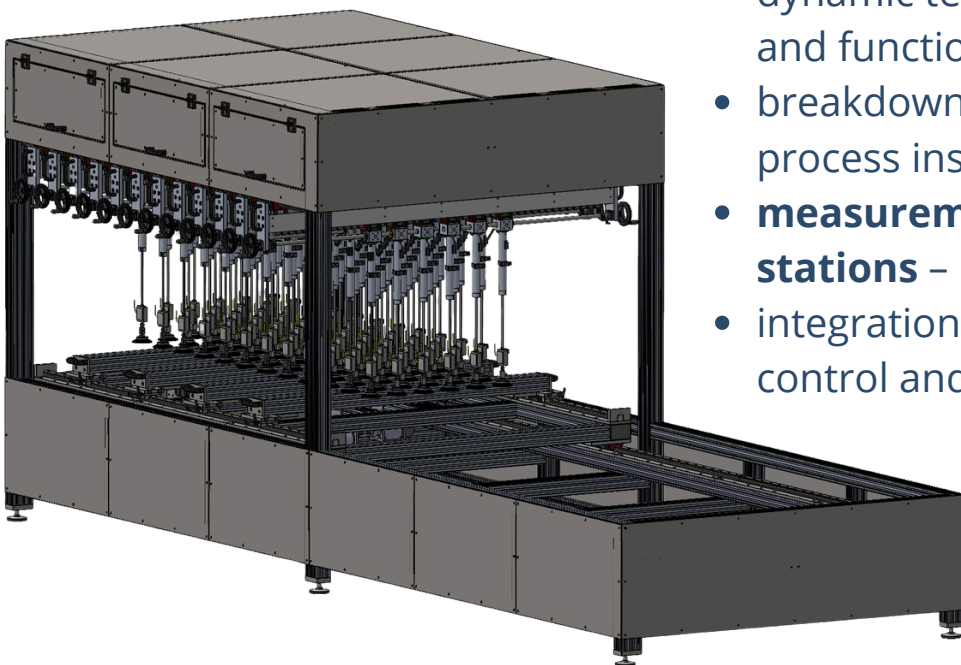
- **handling** of parts with varying sizes and characteristics
- automatic **loading** and **unloading** of machines and production stations
- **palletizing** and **depalletizing**
- industrial robots and cobots
- integration with CNC machines and control systems



Testing machines and inspection stations

We ensure quality control both during the production process and at the stage of final product validation.

- climate chambers and UV aging chambers – **product validation**
- dynamic testing machines – durability and functional tests
- breakdown testing stations – in-process inspection
- **measurement** and **inspection stations** – in-process quality control
- integration of testing systems with control and reporting systems



Special-purpose machines and process stations



We deliver special-purpose machines and process stations that perform specific technological operations, tailored to the product, process, and production conditions.

Processing and preparation:

- multi-spindle drilling machines
- milling machines dedicated to series production
- multi-station **deburring machines**
- robotic deburring machines

Assembly and special operations:

- automatic assembly stations
- **assembly presses** with stroke and force control
- **fastening stations** with torque and angle monitoring (pneumatic and electric screwdrivers, single- and multi-spindle)
- robotic welding cells
- laser and mechanical marking systems

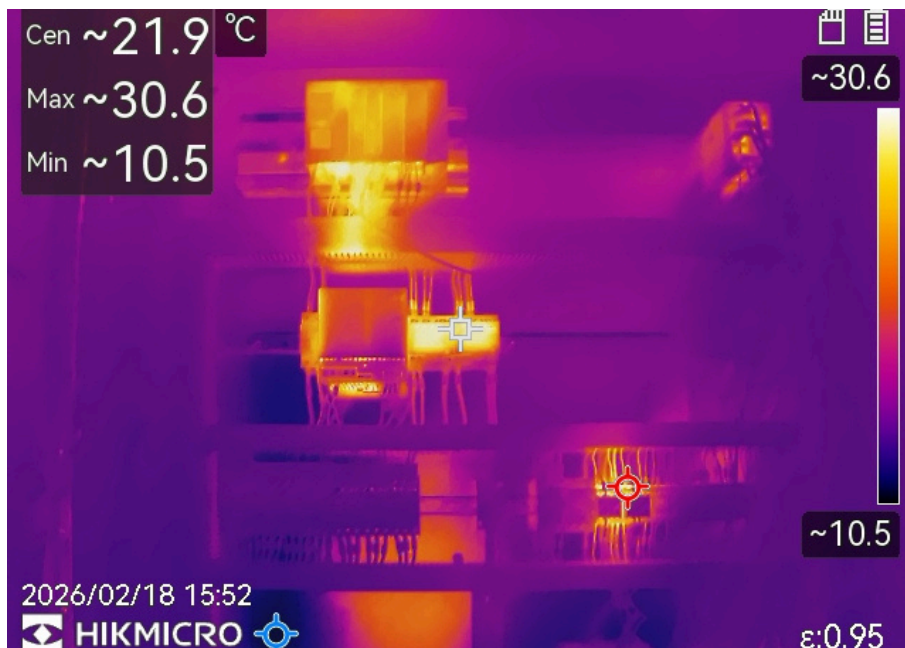
Interoperational transport and internal logistics

We ensure a smooth and organized flow of materials between successive stages of the production process, eliminating downtime and bottlenecks while stabilizing production process.



- **belt, roller, and gravity conveyors**
- transport and transfer systems
- gantry systems
- **intelligent sorting and routing systems**
- integration of material transport with robots and line automation

Technical services and production support



We provide long-term technical support for production solutions, assisting clients in their daily operation, development, and ongoing optimization.

- technical support after commissioning and during operation
- **maintenance** of machines and production lines
- **facility management** for technical infrastructure
- **safety audits** of machines and workstations
- technical consulting for machine purchase and modernization

Relocation of machines, production lines, and entire manufacturing facilities

We provide comprehensive support — from analysis and relocation planning, through **disassembly, transport, and reassembly**, to commissioning and process optimization at the new location. We follow proven procedures, minimizing downtime and production risks.

The scope of relocation includes:

- **technical audit** and inventory of machines and infrastructure
- preparation of a production relocation schedule and plan
- professional disassembly of machines, production lines, and technological installations
- securing and **transport**, both **domestic** and **international**
- mechanical, electrical, and pneumatic assembly at the new location
- connection of utilities and integration with existing infrastructure
- commissioning, functional testing, and post-implementation support



Our partners



SAMSUNG



roltec

cedo

TPV
VISION INNOVATOR

VIESSMANN

MAHLE

SKF

EXIDE / **ENERGIZING**
TECHNOLOGIES / A NEW WORLD

Automation and Robotics of Production

 +48 733 997 444

 automatyzacja@e-mta.pl

Relocation of Machines and Production Lines

 +48 733 502 444

 relokacje@e-mta.pl

Maintenance and Technical Service

 +48 733 997 444

 ur@e-mta.pl

General Inquiries

 biuro@e-mta.pl

MTA Sp. z o.o.

Ul. Kolejowa 10

59-230 Prochowice, Poland

 www.e-mta.pl



MTA

